

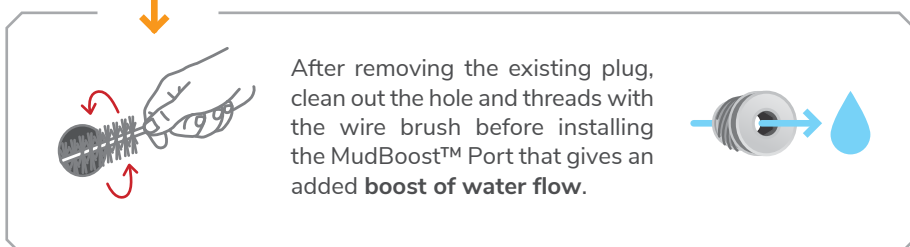
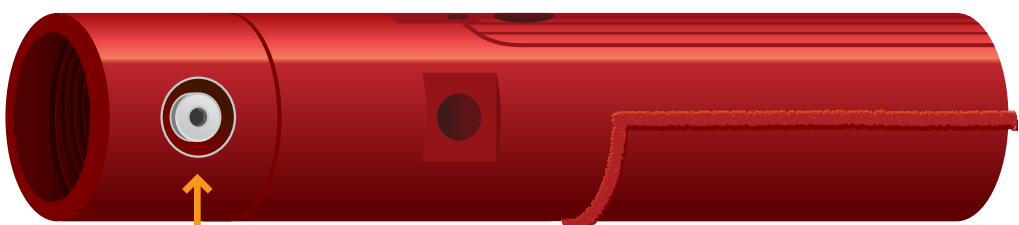


HOW TO ASSEMBLE A FASTBACK SYSTEM

Melfred Borzall's patented fastback system is designed to **increase productivity on direct pullback jobs** by using housing attachments to ream up to a 12-inch hole without ever having to remove the drill head.

1

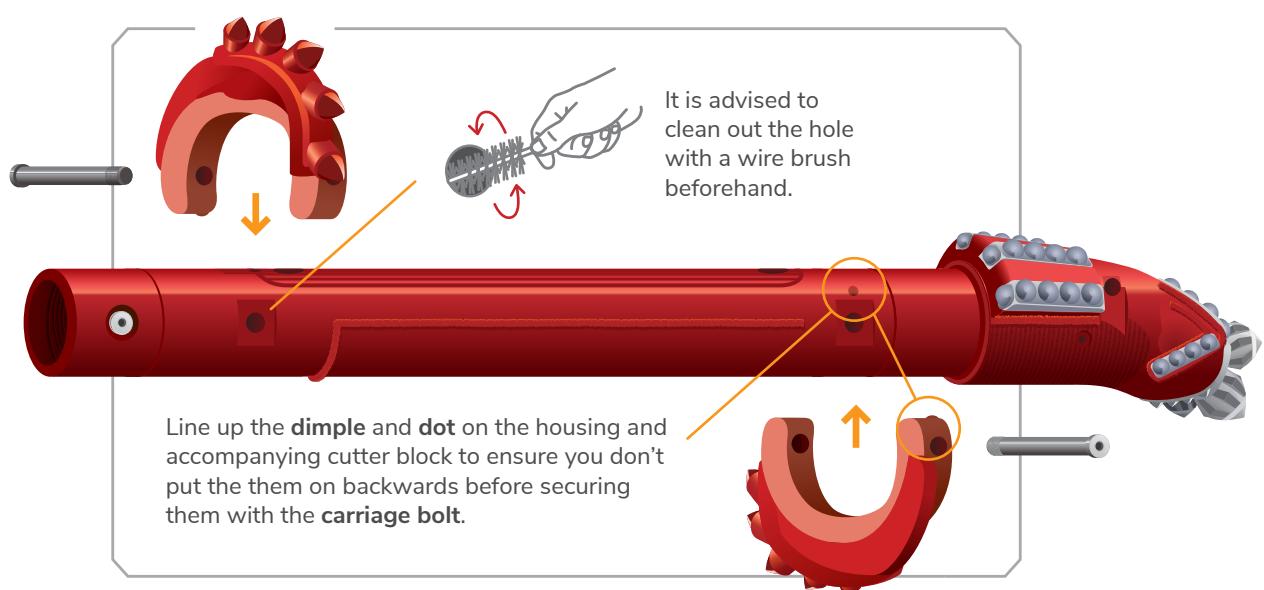
Replace the plug with the included **MudBoost™ Port**.



After removing the existing plug, clean out the hole and threads with the wire brush before installing the MudBoost™ Port that gives an added **boost of water flow**.

2

Attach the cutter blocks to the housing (there are 2, one on the front and another on the back).

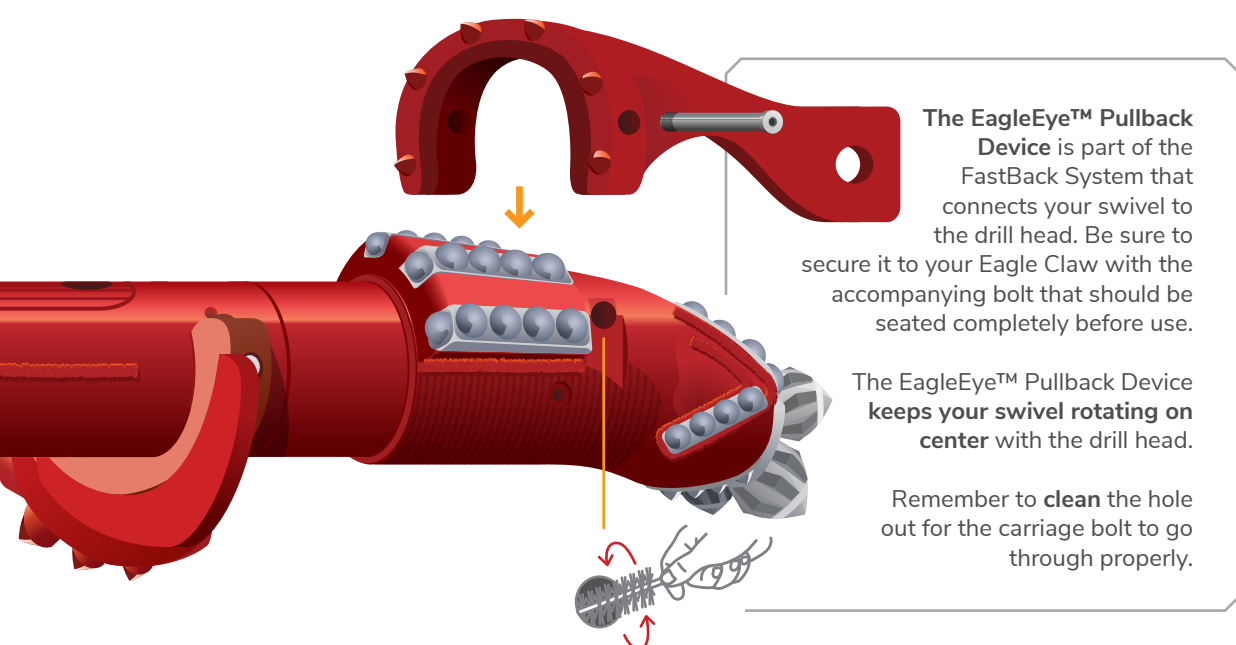


It is advised to clean out the hole with a wire brush beforehand.

Line up the **dimple** and **dot** on the housing and accompanying cutter block to ensure you don't put them on backwards before securing them with the **carriage bolt**.

3

Attach a pullback device for direct pullback of product pipe.



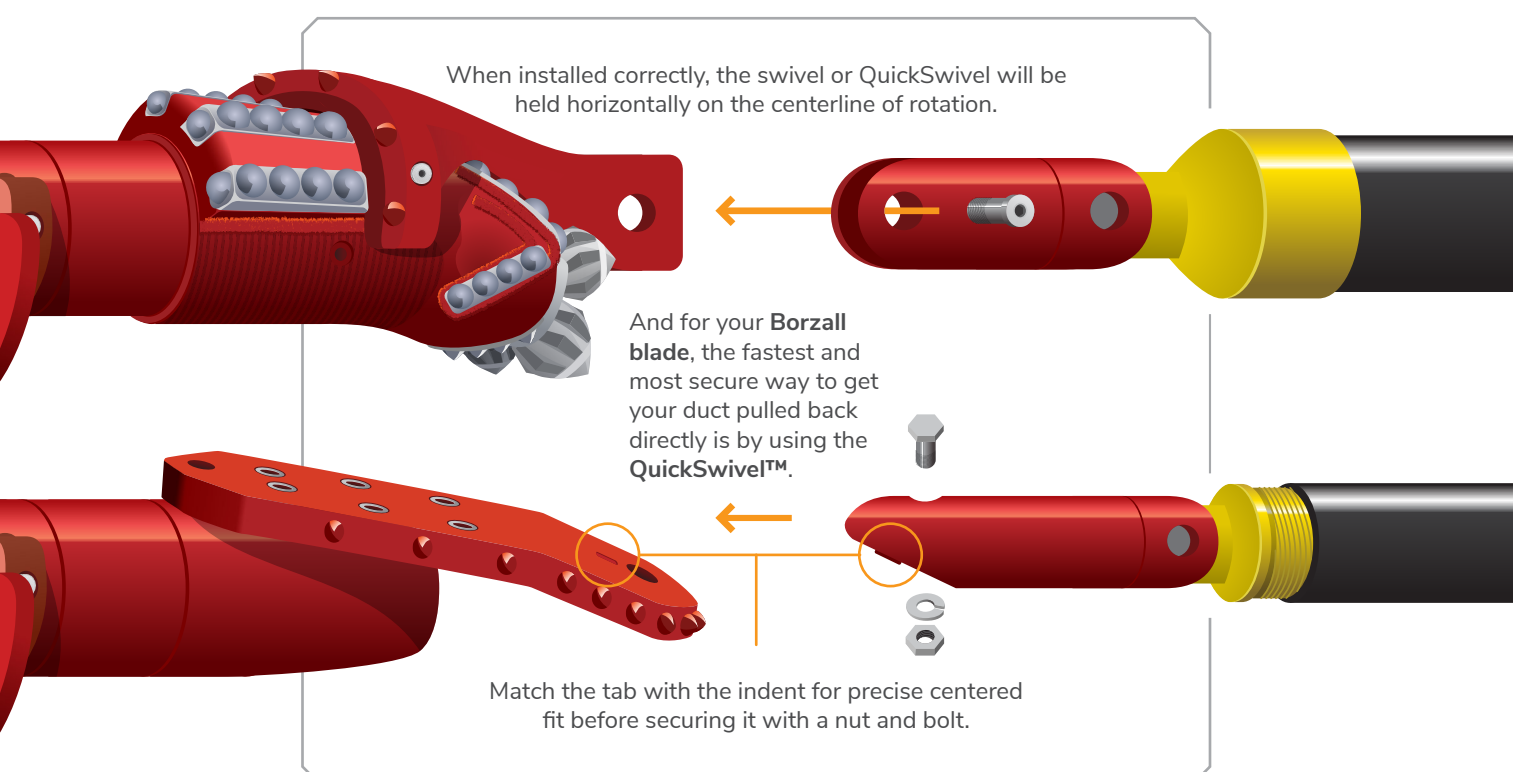
The **EagleEye™ Pullback Device** is part of the FastBack System that connects your swivel to the drill head. Be sure to secure it to your Eagle Claw with the accompanying bolt that should be seated completely before use.

The EagleEye™ Pullback Device **keeps your swivel rotating on center** with the drill head.

Remember to **clean** the hole out for the carriage bolt to go through properly.

4

Attach the swivel to the product and pullback.



When installed correctly, the swivel or QuickSwivel will be held horizontally on the centerline of rotation.

And for your **Borzall blade**, the fastest and most secure way to get your duct pulled back directly is by using the **QuickSwivel™**.

Match the tab with the indent for precise centered fit before securing it with a nut and bolt.

Simple • Quick • Easy

Increase productivity on those smaller bores in tighter spaces

