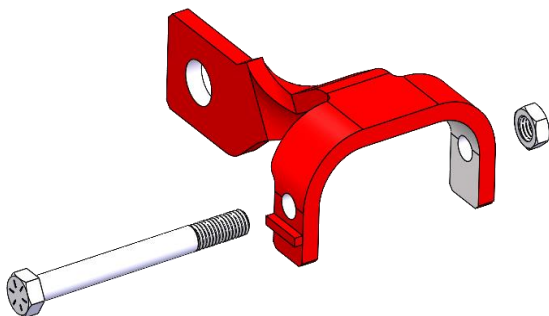


# **EAGLE EYE**

## **LT**

### **USER**

### **INSTRUCTIONS**



Melfred Borzall's Eagle Eye LT fits directly onto the Eagle Claw to allow a direct connection to a swivel without breaking out the threads. Now you can leave your Eagle Claw attached and finish your job faster. Combine the Eagle Eye with Melfred Borzall's patent pending FastBack system and you can pull multiple conduits without changing a bit.

**Important!** Read and understand the manufacturer's manual(s) for the directional drilling machine, locating equipment and all attachments including additional safety manual(s) provided with this tool.



**! Danger!** **Do not use a pipe wrench to remove directly coupled tools.** The rod could rotate causing the device to strike you causing serious injury or death.



**! Danger!** **Stay clear of rotating drill stem and tooling.** You can become caught in the rotating drill stem or tooling causing serious injury or death.



**! Danger!** **Do not wear loose clothing.** Loose articles of clothing can become tangled around the drill stem or tooling causing serious injury or death.

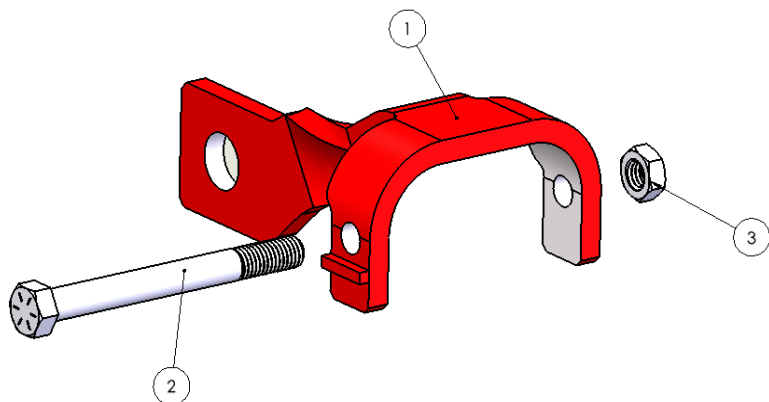


# USER INSTRUCTIONS



Call before you  
dig—dial 811  
(USA only)  
1-888-258-0808  
(USA & Canada)

## In The Box



EC50-FBLT1-305				
ID	Part Number	Description	REQ	SPARE
1	EC50-FBLT1-305	Eagle Eye LT 5.0"	1	-
2	HHCS1/2X5.0	5" L - Hex Head Cap Screw - Grade 8	1	1
3	1/2-NUT	1/2-13 NUT	1	1

EC42-FBLT1-305				
ID	Part Number	Description	REQ	SPARE
1	EC42-FBLT1-305	Eagle Eye LT 4.25"	1	-
2	HHCS7/16X4.50	4.5" L - Hex Head Cap Screw - Grade 8	1	1
3	7/16-NUT	7/16-14 NUT	1	1

USA: (800) 558-7500

Int'l: (805) 739-0118

**MELFRED**  
**BORZALL**

# USER INSTRUCTIONS

EC35-FBLT1-305				
ID	Part Number	Description	REQ	SPARE
1	EC35-FBLT1-305	Eagle Eye LT 3.5"	1	-
2	HHCS5/16X3.75	3.75" L - Hex Head Cap Screw - Grade 8	1	1
3	5/16-NUT	5/16-18 NUT	1	1

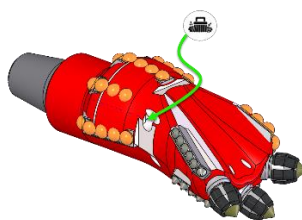
## General Precaution

1. Lock out the drilling machine, following the manufacturer's instructions before doing any work to tools or drill stem.



## Assembly

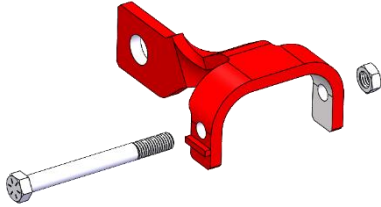
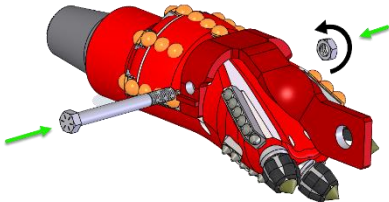
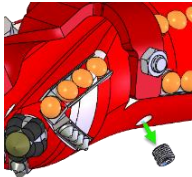
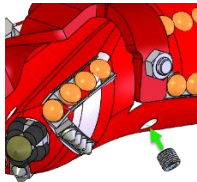
1. After the pilot bore, clean the Eagle Claw. Pay special attention to the flats and through holes.



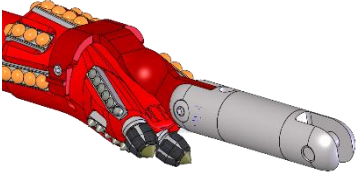
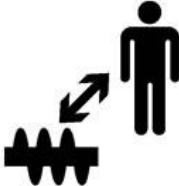

2. Inspect the tools for excessive wear or damage. If the tools are unsuitable for use, remove them and contact your Melfred Borzall representative.



# USER INSTRUCTIONS

<p>3. There is one method of attaching the Eagle Eye LT to the Eagle Claw.</p> <ul style="list-style-type: none"><li>• <b>Bolt and Nut</b></li></ul>	
<p>3a. To install using the Bolt and Nut First install the Eagle-Eye onto the flats of the bit with the pulling eye over the steer face.</p> <p>Install the bolt through the Eagle claw hole; fasten with nut on opposite side and tighten.</p>	
<p>4. Remove the Mud Boost plug from the port on the underside of the Eagle Claw.</p> <p><b>Remember to re-install the plug for the next pilot bore.</b></p>	
<p>5. Install the Mud Boost nozzle into the empty port on the underside of the Eagle Claw.</p> <p><b>Failure to install a nozzle or plug will result in damaged threads.</b></p>	

# USER INSTRUCTIONS

<p>6. Install the swivel onto the pulling tab as per the manufacturer's specifications. Ensure that the swivel is constrained to be in-line with the drill stem.</p>	
<p>7. Once all personnel are a safe distance away from all rotating equipment, begin pullback taking care not to overload the tools and following the manufacturer's instructions.</p>	
<p>8. Begin your bore. Closely monitor sonde temperature to prevent overheating</p>	
<p>9. When the bore is complete, remove the components from the housing body and clean all parts thoroughly.</p>	